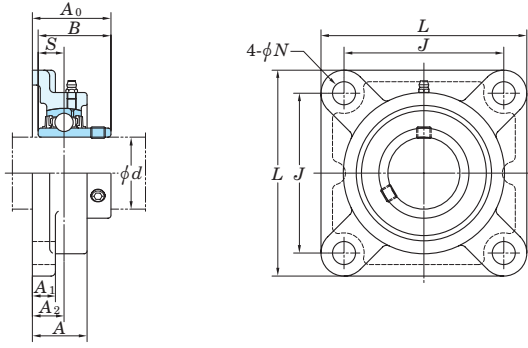


**UCF**  
**Cylindrical bore (with set screws)**  
**d 12 ~ (45) mm**

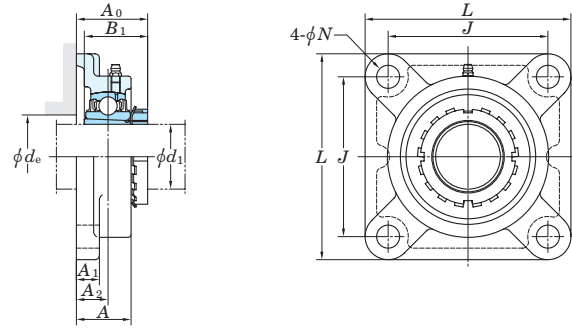


Shaft Dia. mm inch <i>d</i>	Dimensions inch mm										Bolt Size inch mm	Standard			Bestelnummer Numéro commande	Mass kg	Basic Load Ratings kN		Factor <i>f</i> <sub>0</sub>	With Pressed Steel Cover				With Cast Iron Cover												
	<i>L</i>	<i>A</i>	<i>J</i>	<i>N</i>	<i>A</i> <sub>1</sub>	<i>A</i> <sub>2</sub>	<i>A</i> <sub>0</sub>	<i>B</i>	<i>S</i>	Unit No.		Housing No.	Bearing No.	<i>C</i> <sub>r</sub>			<i>C</i> <sub>0r</sub>	Unit No. Open End Type		Unit No. Closed End Type	Dimension mm inch <i>A</i> <sub>s</sub>	Mass kg	Unit No. Open End Type	Unit No. Closed End Type	Dimension mm inch <i>A</i> <sub>c</sub>	Mass kg										
12												UCF201		UC201		0.64			UCF201C	UCF201D	37	1 15/32	0.64	-	-	-	-	-	-	-	-	-	-			
15	5/8	3 3/8	1	2 33/64	15/32	7/16	19/32	1 5/16	1.220	0.500	3/8	UCF201-8	F204	UC201-8		0.64			-	-	-	-	-	-	-	-	-	-	-	-	-	-				
17	3/4	86	25.5	64	12	11	15	33.3	31	12.7	M10	UCF202		UC202		0.62	12.8	6.65	13.2	UCF202C	UCF202D	37	1 15/32	0.62	-	-	-	-	-	-	-	-	-			
20												UCF202-10		UC202-10		0.62			-	-	-	-	-	-	-	-	-	-	-	-	-	-	-			
												UCF203		UC203		0.61			UCF203C	UCF203D	37	1 15/32	0.61	-	-	-	-	-	-	-	-	-	-	-		
												UCF204-12		UC204-12		0.61			-	-	-	-	-	-	-	-	-	-	-	-	-	-	-	-		
												UCF204		UC204	8067853	0.59			UCF204C	UCF204D	37	1 15/32	0.59	UCF204FC	UCF204FD	46	1 13/16	0.74	-	-	-	-	-	-	-	
	7/8	3 3/4	1 1/16	2 3/4	15/32	1/2	5/8	1 13/32	1.343	0.563	3/8	UCF205-14	F205	UC205-14		0.83			-	-	-	-	-	-	-	-	-	-	-	-	-	-	-			
	15/16	95	27	70	12	13	16	35.8	34.1	14.3	M10	UCF205-15		UC205-15		0.83	14.0	7.85	13.9	-	-	-	-	-	-	-	-	-	-	-	-	-	-	-		
	1											UCF205		UC205	8067859	0.83			UCF205C	UCF205D	40	1 9/16	0.83	UCF205FC	UCF205FD	49	1 15/16	1.0	-	-	-	-	-	-	-	
												UCF205-16		UC205-16		0.83			-	-	-	-	-	-	-	-	-	-	-	-	-	-	-	-		
	1	4 1/4	1 3/16	3 17/64	15/32	1/2	45/64	1 19/32	1.500	0.626	3/8	UCFX05	FX05	UCX05		1.2	19.5	11.3	13.9	UCFX05C	UCFX05D	44	1 23/32	1.2	-	-	-	-	-	-	-	-	-	-	-	
		108	30	83	12	13	18	40.2	38.1	15.9	M10	UCFX05-16		UCX05-16		1.2			-	-	-	-	-	-	-	-	-	-	-	-	-	-	-	-		
		4 11/32	1 5/32	3 5/32	5/8	1/2	5/8	1 17/32	1.496	0.591	1/2	UCF305	F305	UC305		1.3	21.2	10.9	12.6	-	-	-	-	-	UCF305C	UCF305D	54	2 1/8	1.6	-	-	-	-	-	-	
	1	110	29	80	16	13	16	39	38	15	M14	UCF305-16		UC305-16		1.3			-	-	-	-	-	-	-	-	-	-	-	-	-	-	-	-		
	1 1/8	4 1/4	1 7/32	3 17/64	15/32	1/2	45/64	1 19/32	1.500	0.626	3/8	UCF206-18	F206	UC206-18		1.1	19.5	11.3	13.9	-	-	-	-	-	-	-	-	-	-	-	-	-	-	-	-	
	1 3/16	108	31	83	12	13	18	40.2	38.1	15.9	M10	UCF206		UC206	8067866	1.1			UCF206C	UCF206D	44	1 23/32	1.1	UCF206FC	UCF206FD	53	2 3/32	1.4	-	-	-	-	-	-	-	-
	1 1/4											UCF206-19		UC206-19		1.1			-	-	-	-	-	-	-	-	-	-	-	-	-	-	-	-	-	
												UCF206-20		UC206-20		1.1			-	-	-	-	-	-	-	-	-	-	-	-	-	-	-	-	-	
	1 3/16	4 19/32	1 11/32	3 5/8	5/8	9/16	3/4	1 3/4	1.689	0.689	1/2	UCFX06	FX06	UCX06		1.6	25.7	15.4	13.9	UCFX06C	UCFX06D	49	1 15/16	1.6	-	-	-	-	-	-	-	-	-	-	-	-
	1 1/4	117	34	92	16	14	19	44.4	42.9	17.5	M14	UCFX06-19		UCX06-19		1.6			-	-	-	-	-	-	-	-	-	-	-	-	-	-	-	-		
		4 29/32	1 1/4	3 47/64	5/8	19/32	45/64	1 23/32	1.693	0.669	1/2	UCFX06-20		UCX06-20		1.6			-	-	-	-	-	-	-	-	-	-	-	-	-	-	-	-	-	
		125	32	95	16	15	18	44	43	17	M14	UCF306	F306	UC306		1.9	26.7	15.0	13.3	-	-	-	-	-	UCF306C	UCF306D	59	2 5/16	2.2	-	-	-	-	-	-	
	1 1/4											UCF207-20		UC207-20		1.5			-	-	-	-	-	-	-	-	-	-	-	-	-	-	-	-	-	
	1 5/16	4 19/32	1 11/32	3 5/8	35/64	19/32	3/4	1 3/4	1.689	0.689	7/16	UCF207-21	F207	UC207-21		1.5	25.7	15.4	13.9	-	-	-	-	-	-	-	-	-	-	-	-	-	-	-	-	
	1 3/8	117	34	92	14	15	19	44.4	42.9	17.5	M12	UCF207-22		UC207-22		1.5			-	-	-	-	-	-	-	-	-	-	-	-	-	-	-	-	-	
												UCF207		UC207	8067875	1.5			13.9	UCF207C	UCF207D	49	1 15/16	1.5	UCF207FC	UCF207FD	58	2 9/32	1.9	-	-	-	-	-	-	-
	1 7/16											UCF207-23		UC207-23		1.5			-	-	-	-	-	-	-	-	-	-	-	-	-	-	-	-	-	
	1 3/8	5 1/8	1 1/2	4 1/64	5/8	9/16	53/64	2 1/32	1.937	0.748	1/2	UCFX07-22	FX07	UCX07-22		2.0	29.1	17.8	14.0	-	-	-	-	-	-	-	-	-	-	-	-	-	-	-	-	
		130	38	102	16	14	21	51.2	49.2	19	M14	UCFX07		UCX07		2.0			14.0	UCFX07C	UCFX07D	55	2 5/32	2.0	-	-	-	-	-	-	-	-	-	-	-	-
	1 7/16											UCFX07-23		UCX07-23		2.0			-	-	-	-	-	-	-	-	-	-	-	-	-	-	-	-	-	
		5 5/16	1 13/32	3 15/16	3/4	5/8	25/32	1 15/16	1.890	0.748	5/8	UCF307	F307	UC307	8067924	2.3	33.4	19.3	13.2	-	-	-	-	-	UCF307C	UCF307D	64	2 17/32	2.7	-	-	-	-	-	-	
	1 1/2	5 1/8	1 13/32	4 1/64	5/8	19/32	53/64	2 1/32	1.937	0.748	1/2	UCF208-24	F208	UC208-24		1.9	29.1	17.8	14.0	-	-	-	-	-	-	-	-	-	-	-	-	-	-	-	-	
	1 9/16	130	36	102	16	15	21	51.2	49.2	19	M14	UCF208-25		UC208-25		1.9			14.0	-	-	-	-	-	-	-	-	-	-	-	-	-	-	-	-	
												UCF208		UC208	8067884	1.9			14.0	UCF208C	UCF208D	55	2 5/32	1.9	UCF208FC	UCF208FD	64	2 17/32	2.3	-	-	-	-	-	-	-
	1 1/2	5 13/32	1 9/16	4 9/64	3/4	9/16	55/64	2 1/16	1.937	0.748	5/8	UCFX08-24	FX08	UCX08-24		2.4	34.1	21.3	14.0	-	-	-	-	-	-	-	-	-	-	-	-	-	-	-	-	
		137	40	105	19	14	22	52.2	49.2	19	M16	UCFX08		UCX08		2.4			14.0	UCFX08C	UCFX08D	56	2 7/32	2.4	-	-	-	-	-	-	-	-	-	-	-	-
	1 1/2	5 29/32	1 9/16	4 13/32	3/4	21/32	29/32	2 7/32	2.047	0.748	5/8	UCF308-24	F308	UC308-24		3.1	40.7	24.0	13.2	-	-	-	-	-	-	-	-	-	-	-	-	-	-	-	-	
		150	40	112	19	17	23	56	52	19	M16	UCF308		UC308	8067930	3.1			13.2	-	-	-	-	-	UCF308C	UCF308D	71	2 25/32	3.6	-	-	-	-	-	-	
	1 5/8											UCF209-26		UC209-26		2.2			-	-	-	-	-	-	-	-	-	-	-	-	-	-	-	-		
	1 11/16	5 13/32	1 1/2	4 9/64	5/8	5/8	55/64	2 1/16	1.937	0.748	1/2	UCF209-27	F209	UC209-27		2.2	34.1	21.3	14.0	-	-	-	-	-	-	-	-	-	-	-	-	-	-	-	-	
	1 3/4	137	38	105	16	16	22	52.2	49.2	19	M14	UCF209-28		UC209-28		2.2			14.0	-	-	-	-	-	-	-	-	-	-	-	-	-	-	-	-	
												UCF209		UC209	8067891	2.2			14.0	UCF209C	UCF209D															





**UKF**  
**Tapered bore (with adapter)**  
 $d_1$  20 ~ (50) mm



Shaft Dia. mm inch	Dimensions											Bolt Size inch mm	Standard				Basic Load Ratings kN	Factor	With Pressed Steel Cover				With Cast Iron Cover								
	inch mm												Unit No.	Housing No.	Bearing No.	Bestelnummer Numéro commande			Adapter <sup>1)</sup> assembly No.	Mass kg	C <sub>r</sub>	C <sub>0r</sub>	f <sub>0</sub>	Unit No.		Dimension mm inch	Mass kg	Unit No.		Dimension mm inch	Mass kg
	$d_1$	L	A	J	N	A <sub>1</sub>	A <sub>2</sub>	A <sub>0</sub> <sup>1)</sup>	B <sub>1</sub> <sup>1)</sup>	d <sub>e</sub> (min.)	Open End Type													Closed End Type	A <sub>s</sub>			Open End Type	Closed End Type		
20	3/4	3 3/4	1 1/16	2 3/4	15/32	1/2	5/8	1 11/32(1 13/32)	1 5/32(1 3/8)	1 3/16	3/8	UKF205	F205	UK205		HE305X(HE2305X) H305X(H2305X)	0.87 0.87	14.0	7.85	13.9	-	-	-	-	-	-	-	-	-	-	-
	3/4	4 1/4	1 3/16	3 17/64	15/32	1/2	45/64	1 15/32	1 3/8	1 3/16	3/8	UKFX05	FX05	UKX05		HE2305X H2305X	1.2 1.2	19.5	11.3	13.9	UKF205C	UKF205D	40	1 9/16	0.87	UKF205FC	UKF205FD	49	1 15/16	1.1	
	3/4	4 11/32	1 5/32	3 5/32	5/8	1/2	5/8	1 15/32	1 3/8	-	1/2	UKF305	F305	UK305		HE2305X H2305X	1.4 1.4	21.2	10.9	12.6	-	-	-	-	-	-	-	-	-	-	
25	1	4 1/4	1 7/32	3 17/64	15/32	1/2	45/64	1 15/32(1 9/16)	1 7/32(1 1/2)	1 13/32	3/8	UKF206	F206	UK206		H306X(H2306X) HE306X(HE2306X)	1.3 1.3	19.5	11.3	13.9	UKF206C	UKF206D	44	1 23/32	1.3	UKF206FC	UKF206FD	53	2 3/32	1.6	
	1	4 19/32	1 11/32	3 5/8	5/8	9/16	3/4	1 9/16	1 1/2	1 13/32	1/2	UKFX06	FX06	UKX06		H2306X HE2306X	1.6 1.6	25.7	15.4	13.9	UKFX06C	UKFX06D	49	1 15/16	1.6	-	-	-	-	-	
	1	4 29/32	1 1/4	3 47/64	5/8	19/32	45/64	1 5/8	1 1/2	-	1/2	UKF306	F306	UK306		H2306X HE2306X	1.9 1.9	26.7	15.0	13.3	-	-	-	-	-	-	-	-	-	-	
30	1 1/8	4 19/32	1 11/32	3 5/8	35/64	19/32	3/4	1 5/8(1 11/16)	1 3/8(1 11/16)	1 5/8	7/16	UKF207	F207	UK207		HS307X(HS2307X) H307X(H2307X)	1.6 1.6	25.7	15.4	13.9	UKF207C	UKF207D	49	1 15/16	1.6	UKF207FC	UKF207FD	58	2 9/32	2.0	
	1 1/8	5 1/8	1 1/2	4 1/64	5/8	9/16	53/64	1 23/32	1 11/16	1 5/8	1/2	UKFX07	FX07	UKX07		HS2307X H2307X	2.0 2.0	29.1	17.8	14.0	UKFX07C	UKFX07D	55	2 5/32	2.0	-	-	-	-	-	
	1 1/8	5 5/16	1 13/32	3 15/16	3/4	5/8	25/32	1 25/32	1 11/16	-	5/8	UKF307	F307	UK307		HS2307X H2307X	2.3 2.3	33.4	19.3	13.2	-	-	-	-	-	-	-	-	-		
35	1 1/4	5 1/8	1 13/32	4 1/64	5/8	19/32	53/64	1 3/4(1 7/8)	1 13/32(1 13/16)	1 13/16	1/2	UKF208	F208	UK208		HE308X(HE2308X) HS308X(HS2308X) H308X(H2308X)	1.9 1.9 1.9	29.1	17.8	14.0	-	-	-	-	-	-	-	-	-	-	
	1 3/8	130	36	102	16	15	21	44.5(48)	36(46)	46	M14	UKFX08	FX08	UKX08		HE2308X HS2308X H2308X	2.3 2.3 2.3	34.1	21.3	14.0	UKF208C	UKF208D	55	2 5/32	1.9	UKF208FC	UKF208FD	64	2 17/32	2.3	
	1 1/4	5 29/32	1 9/16	4 13/32	3/4	21/32	29/32	2	1 13/16	-	5/8	UKF308	F308	UK308		HE2308X HS2308X H2308X	3.1 3.1 3.1	40.7	24.0	13.2	-	-	-	-	-	-	-	-			
40	1 1/2	5 13/32	1 1/2	4 9/64	5/8	5/8	55/64	1 7/8(2)	1 17/32(1 31/32)	2 1/16	1/2	UKF209	F209	UK209	8067895	HE309X(HE2309X) H309X(H2309X) HS309X(HS2309X)	2.3 2.3 2.3	34.1	21.3	14.0	UKF209C	UKF209D	56	2 7/32	2.3	UKF209FC	UKF209FD	66	2 19/32	2.8	
	1 5/8	137	38	105	16	16	22	47.5(51)	39(50)	52	M14	UKFX09	FX09	UKX09		HE2309X H2309X HS2309X	2.7 2.7 2.7	35.1	23.3	14.4	UKFX09C	UKFX09D	60	2 3/8	2.7	-	-	-	-	-	
	1 1/2	5 5/8	1 9/16	4 3/8	3/4	9/16	29/32	1 29/32	1 31/32	2 1/16	5/8	UKF309	F309	UK309		HE2309X H2309X HS2309X	4.1 4.1 4.1	48.9	29.5	13.3	-	-	-	-	-	-	-	-			
45	1 5/8	160	44	125	19	18	25	55	50	-	M16	UKF309	F309	UK309		HE2309X H2309X HS2309X	4.1 4.1 4.1	48.9	29.5	13.3	-	-	-	-	-	-	-	-			
	1 1/2	6 5/16	1 23/32	4 59/64	3/4	23/32	63/64	2 5/32	1 31/32	-	5/8	UKF309	F309	UK309		HE2309X H2309X HS2309X	4.1 4.1 4.1	48.9	29.5	13.3	-	-	-	-	-	-	-				
	1 5/8	160	44	125	19	18	25	55	50	-	M16	UKF309	F309	UK309		HE2309X H2309X HS2309X	4.1 4.1 4.1	48.9	29.5	13.3	UKF309C	UKF309D	76	3	4.7	-	-	-	-		
50	1 3/4	5 5/8	1 9/16	4 3/8	5/8	5/8	55/64	1 29/32(2 1/16)	1 21/32(2 5/32)	2 9/32	1/2	UKF210	F210	UK210		HE310X(HE2310X) H310X(H2310X)	2.6 2.6	35.1	23.3	14.4	UKF210C	UKF210D	59	2 5/16	2.6	UKF210FC	UKF210FD	70.5	2 25/32	3.1	
	1 3/4	143	40	111	16	16	22	48.5(52)	42(55)	58	M14	UKFX10	FX10	UKX10		HE2310X H2310X	3.6 3.6	43.4	29.4	14.4	-	-	-	-	-	-	-				
	1 3/4	6 3/8	1 23/32	5 1/8	3/4	25/32	1 1/32	2 3/32	2 5/32	2 9/32	5/8	UKF310	F310	UK310		HE2310X H2310X	5.1 5.1	62.0	38.3	13.2	UKFX10C	UKFX10D	64	2 17/32	3.6	-	-	-	-		
50	1 7/8	6 7/8	1 7/8	5 13/64	29/32	3/4	1 7/64	2 3/8	2 5/32	-	3/4	UKF310	F310	UK310		HE2310X H2310X	5.1 5.1	62.0	38.3	13.2	-	-	-	-	-	-	-				
	2	175	48	132	23	19	28	60	55	-	M20	UKF310	F310	UK310		HE2310X H2310X	5.1 5.1	62.0	38.3	13.2	UKF310C	UKF310D	83	3 3/32	5.9	-	-	-	-		
50	1 7/8	6 3/8	1 11/16	5 1/8	3/4	23/32	63/64	2 1/16(2 1/4)	1 25/32(2 5/16)	2 17/32	5/8	UKF211	F211	UK211	8067907	HS311X(HS2311X) H311X(H2311X) HE311X(HE2311X)	3.5 3.5 3.5	43.4	29.4	14.4	UKF211C	UKF211D	63	2 15/32	3.5	UKF211FC	UKF211FD	74.5	2 15/16	4.1	
	2	162	43	130	19	18	25	52.5(57)	45(59)	64	M16	UKF211	F211	UK211		HS311X(HS2311X) H311X(H2311X) HE311X(HE2311X)	3.5 3.5 3.5	43.4	29.4	14.4	UKF211C	UKF211D	63	2 15/32	3.5	UKF211FC	UKF211FD	74.5	2 15/16	4.1	

Note 1) Codes shown in parentheses indicate the dimensions and Part No. of applicable adapter (H2300X series) for UK200L3 series (triple-lip seal type).

Remarks 1. In Part No. of unit and units with covers, fitting codes follow bore diameter numbers. (See Table 10.5 in P.51.)

2. Part No. of applicable grease nipples are shown below.  
A-1/4-28UNF.....205~210, X05~X09, 305~308  
A-PT1/8.....211~218, X10~X20, 309~328

3. In Part No. of unit with adapters and bearing with adapters, Part No. of applicable adapter follow the Part No. shown in the dimensional tables.  
(Example of Part No. : UKF206J + H306X, UK206 + H306X)  
4. As for the triple-lip seal type product (205 is the double-lip seal type product), supplementary code L3 (L2) follows the Part No. of unit or bearing.  
(Example of Part No. : UKF206JL3 + H2306X, UK206L3 + H2306X)  
5. For the dimensions and forms of applicable bearings and adapters, see the dimensional tables of ball bearing for unit and adapter assemblies.



