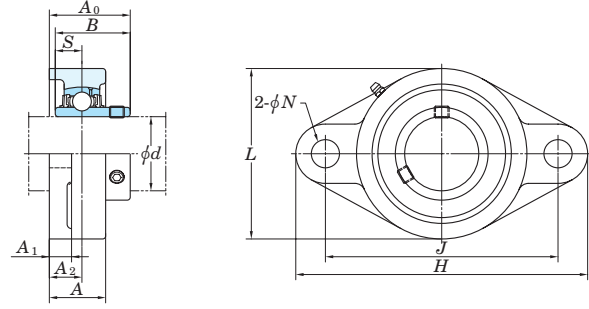


UCFL
Cylindrical bore (with set screws)
d 12 ~ (45) mm



Shaft Dia. mm inch <i>d</i>	Dimensions inch mm											Bolt Size inch mm	Standard			Bestelnummer Numéro commande	Mass kg	Basic Load Ratings kN		Factor <i>f</i> ₀	With Pressed Steel Cover				With Cast Iron Cover				
	<i>H</i>	<i>L</i>	<i>A</i>	<i>J</i>	<i>N</i>	<i>A</i> ₁	<i>A</i> ₂	<i>A</i> ₀	<i>B</i>	<i>S</i>	Unit No.		Housing No.	Bearing No.	Unit No.			Dimension mm inch	Mass kg		Open End Type	Closed End Type	Dimension mm inch	Mass kg					
	<i>H</i>	<i>L</i>	<i>A</i>	<i>J</i>	<i>N</i>	<i>A</i> ₁	<i>A</i> ₂	<i>A</i> ₀	<i>B</i>	<i>S</i>	Unit No.		Housing No.	Bearing No.	Unit No.			Dimension mm inch	Mass kg		Open End Type	Closed End Type	Dimension mm inch	Mass kg					
12 1/2														UCFL201 UCFL201-8 UCFL202 UCFL202-10 UCFL203 UCFL204-12 UCFL204	FL204	UC201 UC201-8 UC202 UC202-10 UC203 UC204-12 UC204	8067854	0.50 0.50 0.48 0.48 0.47 0.47 0.45	12.8 6.65	13.2	UCFL201C UCFL201D — — UCFL202C UCFL202D — — UCFL203C UCFL203D — — UCFL204C UCFL204D	37 37 37 37	1 15/32 1 15/32 1 15/32 1 15/32	0.50 — 0.48 — 0.47 — 0.45	— — — — — — — — UCFL204FC UCFL204FD	— — — — — — — — 46 46	— — — — — — — — 1 13/16 1 13/16	— — — — — — — — 0.6 0.6	
15 5/8	4 7/16	2 3/8	1	3 35/64	15/32	7/16	19/32	1 5/16	1.220	0.500	3/8			UCFL205-14 UCFL205-15 UCFL205 UCFL205-16	FL205	UC205-14 UC205-15 UC205 UC205-16	8067860	0.64 0.64 0.64 0.64	14.0 7.85	13.9	— — UCFL205C UCFL205D — —	— — 40 40	— — 1 9/16 1 9/16	— — 0.64 —	UCFL205FC UCFL205FD — —	— — 49 49	— — 1 15/16 1 15/16	— — 0.83 —	
17 3/4	113	60	25.5	90	12	11	15	33.3	31	12.7	M10			UCFLX05 UCFLX05-16	FLX05	UCX05 UCX05-16		1.1 1.1	19.5 11.3	13.9	UCFLX05C UCFLX05D — —	44 44	1 23/32 1 23/32	1.1 —	— — — —	— — — —	— — — —		
20 3/4														UCFL305 UCFL305-16	FL305	UC305 UC305-16		1.1 1.1	21.2 10.9	12.6	— — — —	— — — —	— — — —	— — — —	UCFL305C UCFL305D	54	2 1/8	1.4	
25 1	5 9/16	3 9/32	1 3/16	4 39/64	15/32	1/2	45/64	1 19/32	1.500	0.626	3/8			UCFL206-18 UCFL206 UCFL206-19 UCFL206-20	FL206	UC206-18 UC206 UC206-19 UC206-20	8067867	0.93 0.93 0.93 0.93	19.5 11.3	13.9	— — UCFL206C UCFL206D — — — —	— — 44 44	— — 1 23/32 1 23/32	— — 0.93 —	UCFL206FC UCFL206FD — — — —	— — 53 53	— — 2 3/32 2 3/32	— — 1.2 —	
25 1	141	83	30	117	12	13	18	40.2	38.1	15.9	M10			UCFLX06 UCFLX06-19 UCFLX06-20	FLX06	UCX06 UCX06-19 UCX06-20		1.5 1.5 1.5	25.7 15.4	13.9	UCFLX06C UCFLX06D — — — —	— — 49 49	— — 1 15/16 1 15/16	— — 1.5 —	— — — —	— — — —			
25 1	150	80	29	113	19	13	16	39	38	15	M16			UCFL306 UCFL306-18	FL306	UC306 UC306-18		1.5 1.5	26.7 15.0	13.3	— — — —	— — — —	— — — —	— — — —	UCFL306C UCFL306D	59	2 5/16	1.8	
30 1 1/8	5 13/16	3 9/32	1 7/32	4 39/64	5/8	1/2	45/64	1 19/32	1.500	0.626	1/2			UCFL207-20 UCFL207-21 UCFL207-22 UCFL207 UCFL207-23	FL207	UC207-20 UC207-21 UC207-22 UC207 UC207-23	8067876	1.2 1.2 1.2 1.2 1.2	25.7 15.4	13.9	— — — — UCFL207C UCFL207D — — — —	— — — — 49 49	— — — — 1 15/16 1 15/16	— — — — 1.2 —	— — — — UCFL207FC UCFL207FD — — — —	— — — — 58 58	— — — — 2 9/32 2 9/32	— — — — 1.6 —	
30 1 3/16	6 5/32	3 3/4	1 11/32	5 1/8	5/8	9/16	3/4	1 3/4	1.689	0.689	1/2			UCFLX07 UCFLX07-22 UCFLX07	FLX07	UCX07 UCX07-22 UCX07		1.9 1.9 1.9	29.1 17.8	14.0	— — UCFLX07C UCFLX07D — — — —	— — 55 55	— — 2 5/32 2 5/32	— — 1.9 —	— — — —	— — — —			
30 1 1/4	180	90	32	134	23	15	18	44	43	17	M20			UCFL307 UCFL307	FL307	UC307 UC307	8067925	1.8	33.4	19.3	13.2	— — — —	— — — —	— — — —	— — — —	UCFL307C UCFL307D	64	2 17/32	2.2
35 1 1/4	6 11/32	3 17/32	1 11/32	5 1/8	5/8	9/16	3/4	1 3/4	1.689	0.689	1/2			UCFL208-24 UCFL208-25 UCFL208	FL208	UC208-24 UC208-25 UC208	8067885	1.6 1.6 1.6	29.1 17.8	14.0	— — UCFL208C UCFL208D — — — —	— — 55 55	— — 2 5/32 2 5/32	— — 1.6 —	UCFL208FC UCFL208FD	64	2 17/32	2.0	
35 1 5/16	161	90	34	130	16	14	19	44.4	42.9	17.5	M14			UCFLX08 UCFLX08-24 UCFLX08	FLX08	UCX08-24 UCX08 UCX08		2.1 2.1 2.1	34.1 21.3	14.0	— — UCFLX08C UCFLX08D — — — —	— — 56 56	— — 2 7/32 2 7/32	— — 2.1 —	— — — —	— — — —			
35 1 3/8	6 23/32	4 1/8	1 1/2	5 43/64	5/8	9/16	53/64	2 1/32	1.937	0.748	1/2			UCFL308-24 UCFL308	FL308	UC308-24 UC308	8067931	2.5 2.5	40.7 24.0	13.2	— — — —	— — — —	— — — —	— — — —	UCFL308C UCFL308D	71	2 25/32	3.0	
35 1 7/16	171	105	38	144	16	14	21	51.2	49.2	19	M14			UCFL209-26 UCFL209-27 UCFL209-28 UCFL209	FL209	UC209-26 UC209-27 UC209-28 UC209	8067892	1.9 1.9 1.9 1.9	34.1 21.3	14.0	— — — — UCFL209C UCFL209D — — — —	— — — — 56 56	— — — — 2 7/32 2 7/32	— — — — 1.9 —	— — — — UCFL209FC UCFL209FD — — — —	— — — — 66 66	— — — — 2 19/32 2 19/32	— — — — 2.3 —	
35 1 3/8	185	100	36	141	23	16	20	49	48	19	M20			UCFLX09 UCFLX09-28 UCFLX09	FLX09	UCX09-28 UCX09 UCX09		2.4 2.4 2.4	35.1 23.3	14.4	— — — — UCFLX09C UCFLX09D — — — —	— — — — 60 60	— — — — 2 3/8 2 3/8	— — — — 2.4 —	— — — — — —	— — — — — —			
40 1 1/2	6 7/8	3 15/16	1 13/32	5 43/64	5/8	9/16	53/64	2 1/32	1.937	0.748	1/2			UCFL209-26 UCFL209-27 UCFL209-28 UCFL209	FL209	UC209-26 UC209-27 UC209-28 UC209	8067892	1.9 1.9 1.9 1.9	34.1 21.3	14.0	— — — — UCFL209C UCFL209D — — — —	— — — — 56 56	— — — — 2 7/32 2 7/32	— — — — 1.9 —	— — — — UCFL209FC UCFL209FD — — — —	— — — — 66 66	— — — — 2 19/32 2 19/32	— — — — 2.3 —	
40 1 9/16	175	100	36	144	16	14	21	51.2	49.2	19	M14			UCFLX09-28 UCFLX09	FLX09	UCX09-28 UCX09		2.4 2.4	35.1 23.3	14.4	— — — —	— — — —	— — — —	— — — —	— — — —				
40 1 1/2	179	111	40	148	16	14	22	52.2	49.2	19	M14			UCFL209-26 UCFL209-27 UCFL209-28 UCFL209	FL209	UC209-26 UC209-27 UC209-28 UC209	8067892	1.9 1.9 1.9 1.9	34.1 21.3	14.0	— — — — UCFL209C UCFL209D — — — —	— — — — 56 56	— — — — 2 7/32 2 7/32	— — — — 1.9 —	— — — — UCFL209FC UCFL209FD — — — —	— — — — 66 66	— — — — 2 19/32 2 19/32	— — — — 2.3 —	
45 1 1/8	7 13/32	4 1/4	1 1/2	5 53/64	3/4	19/32	55/64	2 1/16	1.937	0.748	5/8			UCFL209-26 UCFL209-27 UCFL209-28 UCFL209	FL209	UC209-26 UC209-27 UC209-28 UC209	8067892	1.9 1.9 1.9 1.9	34.1 21.3	14.0	— — — — UCFL209C UCFL209D — — — —	— — — — 56 56	— — — — 2 7/32 2 7/32	— — — — 1.9 —	— — — — UCFL209FC UCFL209FD — — — —	— — — — 66 66	— — — — 2 19/32 2 19/32	— — — — 2.3 —	
45 1 3/4	188	108	38	148	19	15	22	52.2	49.2	19	M16			UCFLX09-28 UCFLX09	FLX09	UCX09-28 UCX09		2.4 2.4	35.1 23.3	14.4	— — — —	— — — —	— — — —	— — — —	— — — —				
45 1 3/4	189	116	40	157	16	14	23	55.6	51.6	19	M14			UCFLX09-28 UCFLX09	FLX09	UCX09-28 UCX09		2.4 2.4	35.1 23.3	14.4	— — — —	— — — —	— — — —	— — — —	— — — —				

Remarks 1. In Part No. of unit and units with covers, fitting codes follow bore diameter numbers. (See Table 10.5 in P.51.)

2. Part No. of applicable grease nipples are shown below.

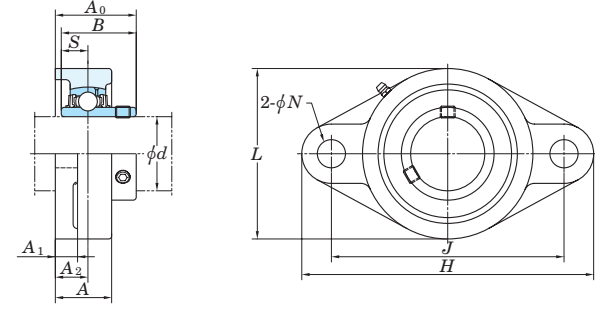
A-1/4-28UNF 201~210, X05~X09, 305~308

A-PT1/8 211~218, X10, 309~326

3. As for the triple-lip seal type product (from 201 to 205 are the double-lip seal type products), supplementary code L3 (or L2) follows the Part No. of unit or bearing. (Example of Part No. : UCFL206JL3, UC206L3)

4. For the dimensions and forms of applicable bearings, see the dimensional tables of ball bearing for unit.

UCFL
Cylindrical bore (with set screws)
d (90) ~ 130 mm

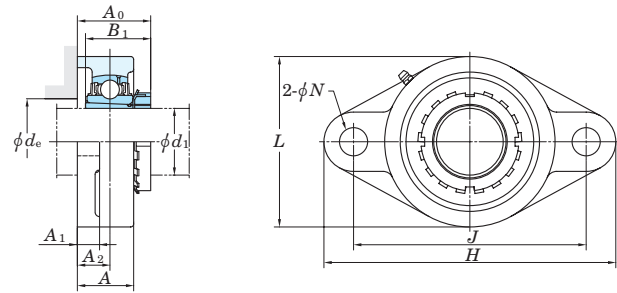


Shaft Dia. mm inch <i>d</i>	Dimensions											Bolt Size inch mm	Standard			Bestelnummer Numéro commande	Mass kg	Basic Load Ratings kN		Factor <i>f</i> ₀	With Pressed Steel Cover				With Cast Iron Cover				
	<i>H</i>	<i>L</i>	<i>A</i>	<i>J</i>	<i>N</i>	inch					Unit No.		Housing No.	Bearing No.	Cr			C _{0r}	Unit No.		Dimension mm inch	Mass kg	Unit No.		Dimension mm inch	Mass kg			
						<i>A</i> ₁	<i>A</i> ₂	<i>A</i> ₀	<i>B</i>	<i>S</i>									Open End Type				Closed End Type	Open End Type			Closed End Type		
90 3 1/2	15 5/32	9 1/4	3	12 13/32	1 1/2	1 13/32	1 47/64	3 15/16	3.780	1.575	1 1/4	UCFL318-56	FL318	UC318-56	19.0	143	107	13.3	-	-	-	-	-	-	-	-	-	-	
	385	235	76	315	38	36	44	100	96	40	M33	UCFL318	FL318	UC318	19.0	143	107	13.3	-	-	-	-	-	-	UCFL318C	UCFL318D	119	4 11/16	20.9
95 -	15 15/16	9 27/32	3 11/16	13	1 39/64	1 9/16	2 21/64	4 3/4	4.055	1.614	1 3/8	UCFL319	FL319	UC319	24.6	153	119	13.3	-	-	-	-	-	-	-	-	-	-	
	405	250	94	330	41	40	59	121	103	41	M36	UCFL319	FL319	UC319	24.6	153	119	13.3	-	-	-	-	-	-	UCFL319C	UCFL319D	140	5 1/2	26.8
100 3 15/16 4	17 5/16	10 5/8	3 11/16	14 11/64	1 47/64	1 9/16	2 21/64	4 29/32	4.252	1.654	1 1/2	UCFL320	FL320	UC320	29.4	173	141	13.2	-	-	-	-	-	-	-	-	-	-	
	440	270	94	360	44	40	59	125	108	42	M39	UCFL320-63	FL320	UC320-63	29.4	173	141	13.2	-	-	-	-	-	-	UCFL320C	UCFL320D	146	5 3/4	32.2
	440	270	94	360	44	40	59	125	108	42	M39	UCFL320-64	FL320	UC320-64	29.4	173	141	13.2	-	-	-	-	-	-	-	-	-	-	
110 -	18 1/2	11 13/16	3 25/32	15 23/64	1 47/64	1 21/32	2 23/64	5 9/32	4.606	1.811	1 1/2	UCFL322	FL322	UC322	36.2	205	180	13.2	-	-	-	-	-	-	-	-	-	-	
	470	300	96	390	44	42	60	131	117	46	M39	UCFL322	FL322	UC322	36.2	205	180	13.2	-	-	-	-	-	-	UCFL322C	UCFL322D	154	6 1/16	39.6
120 -	20 15/32	13	4 11/32	16 59/64	1 27/32	1 7/8	2 9/16	5 1/2	4.961	2.008	1 5/8	UCFL324	FL324	UC324	51.6	207	185	13.5	-	-	-	-	-	-	-	-	-	-	
	520	330	110	430	47	48	65	140	126	51	M42	UCFL324	FL324	UC324	51.6	207	185	13.5	-	-	-	-	-	-	UCFL324C	UCFL324D	163	6 13/32	56.4
130 -	21 21/32	14 3/16	4 17/32	18 7/64	1 27/32	1 31/32	2 9/16	5 3/4	5.315	2.126	1 5/8	UCFL326	FL326	UC326	61.6	229	214	13.6	-	-	-	-	-	-	-	-	-	-	
	550	360	115	460	47	50	65	146	135	54	M42	UCFL326	FL326	UC326	61.6	229	214	13.6	-	-	-	-	-	-	UCFL326C	UCFL326D	172	6 25/32	67.7

Remarks 1. In Part No. of unit and units with covers, fitting codes follow bore diameter numbers. (See Table 10.5 in P.51.)
 2. Part No. of applicable grease nipples are shown below.
 A-1/4-28UNF 201~210, X05~X09, 305~308
 A-PT1/8 211~218, X10, 309~326

3. As for the triple-lip seal type product (from 201 to 205 are the double-lip seal type products), supplementary code L3 (or L2) follows the Part No. of unit or bearing. (Example of Part No. : UCFL206JL3, UC206L3)
 4. For the dimensions and forms of applicable bearings, see the dimensional tables of ball bearing for unit.

UKFL
Tapered bore (with adapter)
 d_1 20 ~ (50) mm



Shaft Dia. mm inch	Dimensions											Bolt Size inch mm	Standard				Basic			Factor				With Pressed Steel Cover			With Cast Iron Cover									
	inch mm												Unit No.	Housing No.	Bearing No.	Bestelnummer Numéro commande	Adapter ¹⁾ assembly No.	Mass kg	Load Ratings kN		f ₀	Unit No.		Dimension mm inch	Mass kg	Unit No.		Dimension mm inch	Mass kg							
	d_1	H	L	A	J	N	A ₁	A ₂	A ₀ ¹⁾	B ₁ ¹⁾	d _e (min.)								C _r	C _{0r}		Open End Type	Closed End Type			A _s	Open End Type			Closed End Type	A _c					
20	3/4	5 1/8	2 11/16	1 1/16	3 57/64	5/8	1/2	5/8	1 11/32(1 13/32)	1 5/32(1 3/8)	1 3/16	1/2	UKFL205	FL205	UK205		HE305X(HE2305X)	0.68	14.0	7.85	13.9	-	-	-	-	-	-	-	-	-	-	-	-	-	-	-
		130	68	27	99	16	13	16	34.5(36)	29(35)	30	M14	UKFLX05	FLX05	UKX05		H305X(H2305X)	0.68	19.5	11.3	13.9	UKFL205C	UKFL205D	40	1 9/16	0.68	UKFL205FC	UKFL205FD	49	1 15/16	0.89					
	3/4	5 9/16	3 9/32	1 3/16	4 39/64	15/32	1/2	45/64	1 15/32	1 3/8	1 3/16	3/8	UKFL305	FL305	UK305		HE2305X	1.0	21.2	10.9	12.6	-	-	-	-	-	-	-	-	-	-	-	-	-	-	
25	1	5 29/32	3 5/32	1 5/32	4 29/64	3/4	1/2	5/8	1 15/32	1 3/8	-	5/8	UKFL206	FL206	UK206		HE2305X	1.1	19.5	11.3	13.9	-	-	-	-	-	-	-	-	-	-	-	-	-	-	-
		150	80	29	113	19	13	16	37.5	35	-	M16	UKFLX06	FLX06	UKX06		H2305X	1.1	25.7	15.4	13.9	UKFL206C	UKFL206D	44	1 23/32	0.97	UKFL206FC	UKFL206FD	53	2 3/32	1.2					
	1	6 5/32	3 3/4	1 11/32	5 1/8	5/8	9/16	3/4	1 9/16	1 1/2	1 13/32	3/8	UKFL306	FL306	UK306		H306X(H2306X)	0.97	26.7	15.0	13.3	-	-	-	-	-	-	-	-	-	-	-	-	-	-	-
30	1 1/8	5 13/16	3 5/32	1 7/32	4 39/64	5/8	1/2	45/64	1 15/32(1 9/16)	1 7/32(1 1/2)	1 13/32	3/8	UKFL207	FL207	UK207		H2306X	1.5	19.5	11.3	13.9	UKFL206C	UKFL206D	44	1 23/32	0.97	UKFL206FC	UKFL206FD	53	2 3/32	1.2					
		148	80	31	117	16	13	18	37.5(39.5)	31(38)	36	M14	UKFLX06	FLX06	UKX06		HE2306X	1.5	25.7	15.4	13.9	UKFLX06C	UKFLX06D	49	1 15/16	1.5	-	-	-	-	-	-	-	-	-	
	1	7 3/32	3 17/32	1 1/4	5 9/32	29/32	19/32	45/64	1 5/8	1 1/2	-	3/4	UKFL307	FL307	UK307		H2306X	1.5	26.7	15.0	13.3	-	-	-	-	-	-	-	-	-	-	-	-	-	-	-
35	1 1/8	6 11/32	3 17/32	1 11/32	5 1/8	5/8	9/16	3/4	1 5/8(1 11/16)	1 3/8(1 11/16)	1 5/8	3/8	UKFL207	FL207	UK207		HE2306X	1.5	25.7	15.4	13.9	-	-	-	-	-	-	-	-	-	-	-	-	-	-	-
		161	90	34	130	16	14	19	41(43)	35(43)	41	M14	UKFLX07	FLX07	UKX07		H307X(HS2307X)	1.3	29.1	17.8	14.0	UKFL207C	UKFL207D	49	1 15/16	1.3	UKFL207FC	UKFL207FD	58	2 9/32	1.7					
	1 1/8	6 23/32	4 1/8	1 1/2	5 49/64	5/8	9/16	59/64	1 23/32	1 11/16	1 5/8	3/8	UKFL307	FL307	UK307		H307X(H2307X)	1.3	33.4	19.3	13.2	-	-	-	-	-	-	-	-	-	-	-	-	-	-	-
40	1 1/4	7 9/32	3 15/16	1 13/32	5 35/64	29/32	5/8	25/32	1 25/32	1 11/16	-	3/4	UKFL208	FL208	UK208	8067888	HS2307X	1.8	29.1	17.8	14.0	-	-	-	-	-	-	-	-	-	-	-	-	-	-	
		185	100	36	141	23	16	20	45.5	43	-	M20	UKFLX07	FLX07	UKX07		H2307X	1.8	33.4	19.3	13.2	UKFL207C	UKFL207D	49	1 15/16	1.3	UKFL207FC	UKFL207FD	58	2 9/32	1.7					
	1 1/8	7 9/32	3 15/16	1 13/32	5 35/64	29/32	5/8	25/32	1 25/32	1 11/16	-	3/4	UKFL307	FL307	UK307		HS2307X	1.9	29.1	17.8	14.0	-	-	-	-	-	-	-	-	-	-	-	-	-	-	-
45	1 1/4	6 7/8	3 15/16	1 13/32	5 43/64	5/8	9/16	53/64	1 3/4(1 7/8)	1 13/32(1 13/16)	1 13/16	3/8	UKFL208	FL208	UK208	8067934	H2307X	1.9	40.7	24.0	13.2	-	-	-	-	-	-	-	-	-	-	-	-	-	-	
		175	100	36	144	16	14	21	44.5(48)	36(46)	46	M14	UKFLX08	FLX08	UKX08		H308X(HE2308X)	1.6	40.7	24.0	13.2	UKFL208C	UKFL208D	55	2 5/32	1.6	UKFL208FC	UKFL208FD	64	2 17/32	2.0					
	1 3/8	7 1/16	4 3/8	1 9/16	5 53/64	5/8	9/16	55/64	1 27/32	1 13/16	1 13/16	3/8	UKFL308	FL308	UK308		H308X(HS2308X)	1.6	48.9	29.5	13.3	-	-	-	-	-	-	-	-	-	-	-	-	-	-	-
50	1 1/4	7 7/8	4 13/32	1 9/16	6 7/32	29/32	21/32	29/32	2	1 13/16	-	3/4	UKFL308	FL308	UK308	8067934	H2308X	2.1	48.9	29.5	13.3	-	-	-	-	-	-	-	-	-	-	-	-	-	-	
		179	111	40	148	16	14	22	46.5	46	46	M14	UKFLX08	FLX08	UKX08		HS2308X	2.1	48.9	29.5	13.3	UKFLX08C	UKFLX08D	56	2 7/32	2.1	-	-	-	-	-	-	-	-	-	
	1 3/8	7 7/8	4 13/32	1 9/16	6 7/32	29/32	21/32	29/32	2	1 13/16	-	3/4	UKFL308	FL308	UK308		H2308X	2.1	48.9	29.5	13.3	-	-	-	-	-	-	-	-	-	-	-	-	-	-	
50	1 1/2	7 13/32	4 1/4	1 1/2	5 53/64	3/4	19/32	55/64	1 7/8(2)	1 17/32(1 31/32)	2 1/16	5/8	UKFL209	FL209	UK209		HE2308X	2.5	34.1	21.3	14.0	-	-	-	-	-	-	-	-	-	-	-	-	-	-	
		188	108	38	148	19	15	22	47.5(51)	39(50)	52	M16	UKFLX09	FLX09	UKX09		HS2308X	2.5	34.1	21.3	14.0	UKFL209C	UKFL209D	56	2 7/32	2.0	UKFL209FC	UKFL209FD	66	2 19/32	2.5					
	1 5/8	7 7/16	4 9/16	1 9/16	6 3/16	5/8	9/16	29/32	1 29/32	1 31/32	2 1/16	3/8	UKFL309	FL309	UK309		H2308X	2.5	40.7	24.0	13.2	-	-	-	-	-	-	-	-	-	-	-	-	-	-	
50	1 1/2	7 7/16	4 9/16	1 9/16	6 3/16	5/8	9/16	29/32	1 29/32	1 31/32	2 1/16	3/8	UKFL209	FL209	UK209		HS2308X	2.5	40.7	24.0	13.2	-	-	-	-	-	-	-	-	-	-	-	-	-	-	
		189	116	40	157	16	14	23	48.5	50	52	M14	UKFLX09	FLX09	UKX09		H2308X	2.5	48.9	29.5	13.3	UKFLX09C	UKFLX09D	60	2 3/8	2.5	-	-	-	-	-	-	-	-		
	1 5/8	9 1/16	4 29/32	1 23/32	6 31/32	63/64	23/32	63/64	2 5/32	1 31/32	-	7/8	UKFL309	FL309	UK309		HS2309X	3.6	48.9	29.5	13.3	-	-	-	-	-	-	-	-	-	-	-	-	-	-	
50	1 3/4	7 3/4	4 17/32	1 9/16	6 3/16	3/4	19/32	55/64	1 29/32(2 1/16)	1 21/32(2 5/32)	2 9/32	5/8	UKFL210	FL210	UK210		HE2309X	3.6	48.9	29.5	13.3	-	-	-	-	-	-	-	-	-	-	-	-	-	-	
		197	115	40	157	19	15	22	48.5(52)	42(55)	58	M16	UKFLX10	FLX10	UKX10		H309X(H2309X)	2.0	48.9	29.5	13.3	UKFL210C	UKFL210D	59	2 5/16	2.3	UKFL210FC	UKFL210FD	70.5	2 25/32	2.8					
	1 3/4	8 1/2	5 1/4	1 23/32	7 1/4	3/4	25/32	1 1/32	1 3/32	2 5/32	2 9/32	5/8	UKFL310	FL310	UK310		H309X(H2309X)	2.0	62.0	38.3	13.2	-	-	-	-	-	-	-	-	-	-	-	-	-	-	
50	1 3/4	9 7/16	5 1/2	1 7/8	7 23/64	63/64	3/4	1 7/64	2 3/8	2 5/32	-	7/8	UKFL210	FL210	UK210		H309X(H2309X)	2.0	62.0	38.3	13.2	-	-	-	-	-	-	-	-	-	-	-	-	-	-	
		240	140	48	187	25	19	28	60	55	-	M22	UKFLX10	FLX10	UKX10		HE2310X	3.7	62.0	38.3	13.2	UKFL210C	UKFL210D	64	2 17/32	3.7	-	-	-	-	-	-	-	-		
	1 3/4	9 7/16	5 1/2	1 7/8	7 23/64	63/64	3/4	1 7/64	2 3/8	2 5/32	-	7/8	UKFL310	FL310	UK310		HE2310X	4.4	62.0	38.3	13.2	-	-	-	-	-	-	-	-	-	-	-	-	-	-	
50	2	8 13/16	5 1/8	1 11/16	7 1/4	3/4	23/32	63/64	2 1/16(2 1/4)	1 29/32(2 5/16)	2 17/32	5/8	UKFL211	FL211	UK211		HE2310X	4.4	43.4	29.4	14.4	-	-	-	-	-	-	-	-	-	-	-	-	-		
		224	130	43	184	19	18	25	52.5(57)	45(59)	64	M16	UKFLX11	FLX11	UKX11		H311X(H2311X)	3.3	43.4	29.4	14.4	UKFL211C	UKFL211D	63	2 15/32	3.3	UKFL211FC	UKFL211FD	74.5	2 15/16	3.9					

Note 1) Codes shown in parentheses indicate the dimensions and Part No. of applicable adapter (H2300X series) for UK200L3 series (triple-lip seal type).

Remarks 1. In Part No. of unit and units with covers, fitting codes follow bore diameter numbers. (See Table 10.5 in P.51.)

2. Part No. of applicable grease nipples are shown below.
A-1/4-28UNF.....205-210, X05-X09, 305-308
A-PT1/8.....211-218, X10, 309-326

3. In Part No. of unit with adapters and bearing with adapters, Part No. of applicable adapter follow the Part No. shown in the dimensional tables. (Example of Part No. : UKFL206J + H306X, UK206 + H306X)
4. As for the triple-lip seal type product (205 is the double-lip seal type product), supplementary code L3 (or L2) follows the Part No. of unit or bearing. (Example of Part No. : UKFL206JL3 + H2306X, UK206L3 + H2306X)
5. For the dimensions and forms of applicable bearings and adapters, see the dimensional tables of ball bearing for unit and adapter assemblies.

