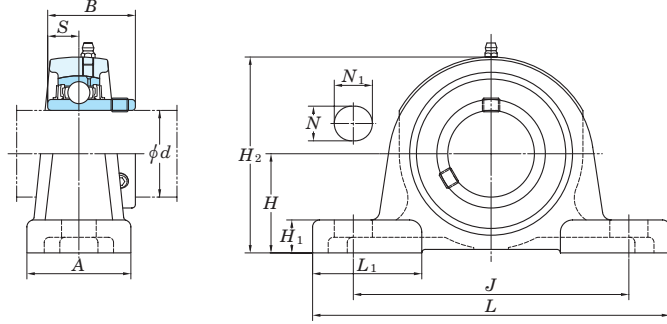


UCP
Cylindrical bore (with set screws)
d 12 ~ (45) mm



Shaft Dia. mm inch d	Dimensions inch mm												Bolt Size inch mm	Standard			Mass kg	Basic Load Ratings kN		Factor f ₀	With Pressed Steel Covers				With Cast Iron Covers					
	H	L	A	J	N	N ₁	H ₁	H ₂	L ₁	B	S	Unit No.		Housing No.	Bearing No.	Bestelnummer Numéro commande		C _r	C _{0r}		Unit No. Open Ends Type Closed End Type	Dimension mm inch A _s	Mass kg	Unit No. Open Ends Type Closed End Type	Dimension mm inch A _c	Mass kg				
12 15 17	1/2 5/8	1 3/16	5	1 1/2	3 3/4	1/2	23/32	15/32	2 3/8	1 1/2	1.220	0.500	3/8 M10	UCP201 UCP201-8 UCP202 UCP202-10 UCP203	P203	UC201 UC201-8 UC202 UC202-10 UC203	8067855	0.63 0.63 0.61 0.61 0.60	12.8	6.65	13.2	UCP201C	UCP201CD	44	1 23/32	0.63	-	-	-	-
		-	-	-	-	-	-	-	-	-	-	-										-	-	-	-	-				
		UCP202C	UCP202CD	44	1 23/32	0.61	-	-	-	-	-	-										-	-	-	-	-	-			
20	3/4	1 5/16	5	1 1/2	3 3/4	1/2	23/32	1/2	2 17/32	1 1/2	1.220	0.500	3/8 M10	UCP204-12 UCP204	P204	UC204-12 UC204	8067855	0.66 0.66	12.8	6.65	13.2	-	-	-	-	-	-	-	-	
		33.3	127	38	95	13	18	13	64	38	31	12.7										UCP204C	UCP204CD	44	1 23/32	0.60	UCP204FC	UCP204FCD	62	2 7/16
25	7/8 15/16	1 7/16	5 1/2	1 1/2	4 1/8	1/2	23/32	1/2	2 25/32	1 11/16	1.343	0.563	3/8 M10	UCP205-14 UCP205-15 UCP205 UCP205-16	P205	UC205-14 UC205-15 UC205 UC205-16	8067861	0.80 0.80 0.80 0.80	14.0	7.85	13.9	-	-	-	-	-	-	-	-	
		36.5	140	38	105	13	18	13	71	43	34.1	14.3										UCP205C	UCP205CD	48	1 7/8	0.80	UCP205FC	UCP205FCD	66	2 19/32
	1	1 3/4	6 1/4	2	4 11/16	21/32	31/32	5/8	3 3/8	1 27/32	1.500	0.626	1/2 M14	UCPX05 UCPX05-16	PX05	UCX05 UCX05-16	-	1.5 1.5	19.5	11.3	13.9	UCPX05C	UCPX05CD	52	2 1/16	1.5	-	-	-	-
	44.4	159	51	119	17	25	16	86	47	38.1	15.9	UCP305										UC305	1.7	21.2	10.9	12.6	-	-	-	-
1	1 49/64	6 7/8	1 3/4	5 3/16	21/32	25/32	5/8	3 11/32	2 5/32	1.496	0.591	1/2 M14	UCP305-16 UCP306	P305	UC305-16 UC306	-	1.7 1.7	21.2	10.9	12.6	-	-	-	-	-	-	-	-	-	
45	175	45	132	17	20	16	85	55	38	15	UCP305C										UCP305CD	76	3	2.3	-	-	-	-	-	-
30	1 1/8	1 11/16	6 1/2	1 7/8	4 3/4	21/32	13/16	19/32	3 5/16	2 3/32	1.500	0.626	1/2 M14	UCP206-18 UCP206 UCP206-19 UCP206-20	P206	UC206-18 UC206 UC206-19 UC206-20	8067868	1.3 1.3 1.3 1.3	19.5	11.3	13.9	-	-	-	-	-	-	-	-	
		42.9	165	48	121	17	21	15	84	53	38.1	15.9										UCP206C	UCP206CD	52	2 1/16	1.3	UCP206FC	UCP206FCD	70	2 3/4
	1 3/16	1 7/8	6 7/8	2 1/4	5	21/32	31/32	21/32	3 21/32	2 5/32	1.689	0.689	1/2 M14	UCPX06 UCPX06-19 UCPX06-20	PX06	UCX06 UCX06-19 UCX06-20	-	2.1 2.1 2.1	25.7	15.4	13.9	UCPX06C	UCPX06CD	59	2 5/16	2.1	-	-	-	-
	47.6	175	57	127	17	25	17	93	55	42.9	17.5	-										-	-	-	-	-	-	-	-	-
1 1/4	1 31/32	7 3/32	1 31/32	5 1/2	21/32	25/32	21/32	3 3/4	2 3/32	1.693	0.669	1/2 M14	UCP306	P306	UC306	8067921	2.2	26.7	15.0	13.3	-	-	-	-	-	-	-	-	-	
50	180	50	140	17	20	17	95	53	43	17	UCP306C										UCP306CD	82	3 7/32	2.8	-	-	-	-	-	-
35	1 1/4 1 5/16	1 7/8	6 9/16	1 7/8	5	21/32	13/16	5/8	3 21/32	2	1.689	0.689	1/2 M14	UCP207-20 UCP207-21 UCP207-22 UCP207	P207	UC207-20 UC207-21 UC207-22 UC207	8067877	1.6 1.6 1.6 1.6	25.7	15.4	13.9	-	-	-	-	-	-	-	-	
		47.6	167	48	127	17	21	16	93	51	42.9	17.5										UCP207C	UCP207CD	59	2 5/16	1.6	UCP207FC	UCP207FCD	78	3 1/16
	1 7/16	2 1/8	8	2 1/4	5 11/16	21/32	1 3/16	3/4	4 1/8	2 17/32	1.937	0.748	1/2 M14	UCPX07-22 UCPX07 UCPX07-23	PX07	UCX07-22 UCX07 UCX07-23	-	2.7 2.7 2.7	29.1	17.8	14.0	UCPX07C	UCPX07CD	68	2 11/16	2.7	-	-	-	-
	54	203	57	144	17	30	19	105	64	49.2	19	-										-	-	-	-	-	-	-	-	-
1 3/8	2 13/64	8 9/32	2 7/32	6 9/16	21/32	31/32	3/4	4 7/32	2 9/16	1.890	0.748	1/2 M14	UCP307	P307	UC307	8067926	3.0	33.4	19.3	13.2	-	-	-	-	-	-	-	-		
56	210	56	160	17	25	19	107	65	48	19	UCP307C										UCP307CD	88	3 15/32	3.8	-	-	-	-	-	-
40	1 1/2 1 9/16	1 15/16	7 1/4	2 1/8	5 13/32	21/32	13/16	21/32	3 27/32	2 1/4	1.937	0.748	1/2 M14	UCP208-24 UCP208-25 UCP208	P208	UC208-24 UC208-25 UC208	8067886	2.0 2.0 2.0	29.1	17.8	14.0	-	-	-	-	-	-	-	-	
		49.2	184	54	137	17	21	17	98	57	49.2	19										UCP208C	UCP208CD	68	2 11/16	2.0	UCP208FC	UCP208FCD	86	3 3/8
	1 1/2	2 5/16	8 3/4	2 5/8	6 1/8	25/32	1 1/4	13/16	4 1/2	2 25/32	1.937	0.748	5/8 M16	UCPX08-24 UCPX08	PX08	UCX08-24 UCX08	-	3.5 3.5	34.1	21.3	14.0	-	-	-	-	-	-	-		
58.7	222	67	156	20	32	21	114	71	49.2	19	UCPX08C	UCPX08CD										68	2 11/16	3.5	-	-	-	-	-	
1 1/2	2 23/64	8 21/32	2 3/8	6 11/16	21/32	1 1/16	3/4	4 21/32	2 9/16	2.047	0.748	1/2 M14	UCP308-24 UCP308	P308	UC308-24 UC308	8067932	3.8 3.8	40.7	24.0	13.2	-	-	-	-	-	-	-			
60	220	60	170	17	27	19	118	65	52	19	UCP308C										UCP308CD	96	3 25/32	4.8	-	-	-	-	-	
45	1 5/8 1 11/16	2 1/8	7 15/32	2 1/8	5 3/4	21/32	13/16	21/32	4 3/16	2 3/8	1.937	0.748	1/2 M14	UCP209-26 UCP209-27 UCP209-28 UCP209	P209	UC209-26 UC209-27 UC209-28 UC209	8067893	2.2 2.2 2.2 2.2	34.1	21.3	14.0	-	-	-	-	-	-	-	-	
		54	190	54	146	17	21	17	106	60	49.2	19										UCP209C	UCP209CD	68	2 11/16	2.2	UCP209FC	UCP209FCD	88	3 15/32
	1 3/4	2 5/16	8 3/4	2 5/8	6 1/8	25/32	1 5/16	13/16	4 9/16	2 25/32	2.031	0.748	5/8 M16	UCPX09-28 UCPX09	PX09	UCX09-28 UCX09	-	3.7 3.7	35.1	23.3	14.4	-	-	-	-	-	-	-		
	58.7	222	67	156	20	33	21	116	71	51.6	19	UCPX09C										UCPX09CD	73	2 7/8	3.7	-	-	-	-	

Remarks 1. In Part No. of unit and units with covers, fitting codes follow bore diameter numbers. (See Table 10.5 in P.51.)

2. Part No. of applicable grease nipples are shown below.

A-1/4-28UNF..... 201~210, X05~X09, 305~308

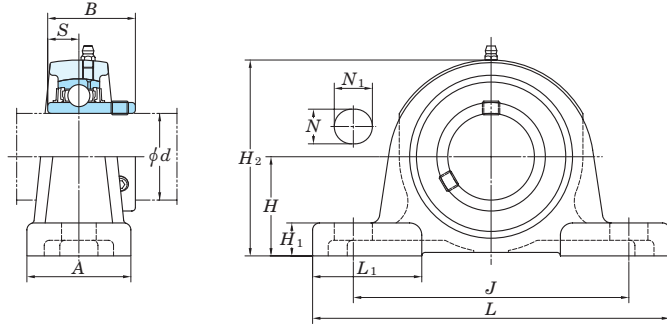
A-PT1/8..... 211~218, X10~X20, 309~328

3. As for the triple-lip seal type product (from 201 to 205 are the double-lip seal type products), supplementary code L3 (or L2) follows the Part No. of unit or bearing. (Example of Part No. : UCP206JL3, UC206L3)

4. For the dimensions and forms of applicable bearings, see the dimensional tables of ball bearing for unit.

5. Representative examples of the forms of housing are indicated.

UCP
Cylindrical bore (with set screws)
d (75) ~ 140 mm

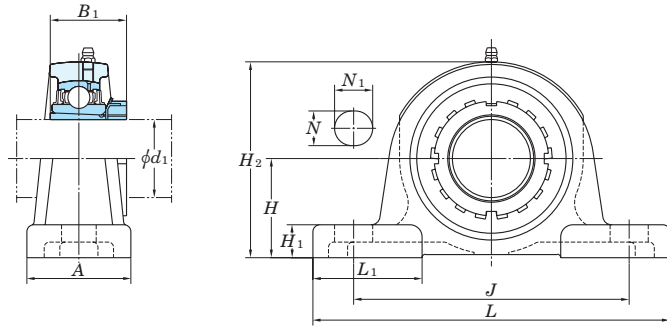


Shaft Dia. mm inch <i>d</i>	Dimensions inch mm												Bolt Size inch mm	Standard			Mass kg	Basic Load Ratings kN		Factor <i>f</i> ₀	With Pressed Steel Covers				With Cast Iron Covers				
	<i>H</i>	<i>L</i>	<i>A</i>	<i>J</i>	<i>N</i>	<i>N</i> ₁	<i>H</i> ₁	<i>H</i> ₂	<i>L</i> ₁	<i>B</i>	<i>S</i>	Unit No.		Housing No.	Bearing No.	Bestelnummer Numéro commande		<i>C</i> _r	<i>C</i> _{0r}		Unit No. Open Ends Type	Unit No. Closed End Type	Dimension mm inch <i>A</i> _s	Mass kg	Unit No. Open Ends Type	Unit No. Closed End Type	Dimension mm inch <i>A</i> _c	Mass kg	
75 2 15/16 3	3 15/16	14 31/32	3 15/16	11 13/32	1 1/16	1 9/16	1 3/8	7 25/32	4 7/32	3.228	1.260	7/8	UCP315-47	P315	UC315-47		14.8												
	100	380	100	290	27	40	35	198	107	82	32	M22	UCP315		UC315		14.8	113	77.2	13.2					UCP315C	UCP315CD	134	5 9/32	17.3
													UCP315-48		UC315-48		14.8												
80 3 1/8	3 1/2	11 1/2	3 1/16	9 1/8	31/32	1 3/8	1 1/4	6 27/32	3 3/8	3.252	1.311	3/4	UCP216-50	P216	UC216-50		9.0	72.7	53.0	14.6									
	88.9	292	78	232	25	35	32	174	86	82.6	33.3	M20	UCP216		UC216		9.0								UCP216C	UCP216CD	108	4 1/4	9.0
	4	15	4	11 1/8	1 1/16	2 9/32	1 11/32	7 11/16	4 9/16	3.374	1.343	7/8	UCPX16	PX16	UCX16		15.3	84.0	61.9	14.5									
85 3 1/4	4 11/64	15 3/4	4 11/32	11 13/16	1 1/16	1 9/16	1 3/8	8 7/32	4 23/32	3.386	1.339	7/8	UCP316	P316	UC316		18.5	123	86.7	13.3									
	106	400	110	300	27	40	35	209	120	86	34	M22													UCP316C	UCP316CD	138	5 7/16	21.4
	4	15	4	11 1/8	1 1/16	2 3/8	1 11/32	7 7/8	4 9/16	3.780	1.563	7/8	UCP217-52	P217	UC217-52		10.8	84.0	61.9	14.5									
85 3 7/16	95.2	310	83	247	25	40	32	185	90	85.7	34.1	M20	UCP217		UC217		10.8												
	4	15	4	11 1/8	1 1/16	2 3/8	1 11/32	7 7/8	4 9/16	3.780	1.563	7/8	UCPX17	PX17	UCX17		16.1	96.1	71.5	14.5									
	101.6	381	102	283	27	60	34	200	116	96	39.7	M22	UCPX17-55		UCX17-55		16.1												
90 3 1/2	4 13/32	16 17/32	4 11/32	12 19/32	1 5/16	1 25/32	1 9/16	8 21/32	4 23/32	3.780	1.575	1	UCP317	P317	UC317		20.3	133	96.8	13.3									
	112	420	110	320	33	45	40	220	120	96	40	M27																	
	4	12 7/8	3 15/32	10 5/16	1 1/16	1 25/32	1 11/32	7 25/32	4 23/32	3.780	1.563	7/8	UCP218-56	P218	UC218-56		13.9	96.1	71.5	14.5									
90 3 1/2	101.6	327	88	262	27	45	34	198	104	96	39.7	M22	UCP218		UC218		13.9												
	4	15	4 3/8	11 1/8	1 1/16	2 3/8	1 1/2	8 1/32	4 9/16	4.094	1.689	7/8	UCPX18	PX18	UCX18		19.1	109	81.9	14.4									
	101.6	381	111	283	27	60	38	204	116	104	42.9	M22																	
95 3 1/2	4 41/64	16 15/16	4 11/32	13	1 5/16	1 25/32	1 9/16	9 7/32	4 23/32	3.780	1.575	1	UCP318-56	P318	UC318-56		22.8	143	107	13.3									
	118	430	110	330	33	45	40	234	120	96	40	M27	UCP318		UC318		22.8												
	4 59/64	18 1/2	4 23/32	14 3/16	1 13/32	1 31/32	1 13/16	9 3/4	4 29/32	4.055	1.614	1 1/8	UCP319	P319	UC319		29.0	153	119	13.3									
100 3 15/16 4	5	17	4 3/4	13 1/4	1 5/16	2 9/16	1 25/32	9 21/32	4 31/32	4.626	1.937	1	UCPX20	PX20	UCX20		30.4	133	105	14.4									
	127	432	121	337	33	65	45	245	126	117.5	49.2	M27	UCPX20-63		UCX20-63		30.4												
	5 33/64	19 9/32	4 23/32	14 31/32	1 13/32	1 31/32	1 13/16	10 3/4	5 1/2	4.252	1.654	1 1/8	UCP320	P320	UC320		35.1	173	141	13.2									
100 3 15/16 4	140	490	120	380	36	50	46	273	140	108	42	M30	UCPX20-64		UCX20-64		30.4												
	5 33/64	19 9/32	4 23/32	14 31/32	1 13/32	1 31/32	1 13/16	10 3/4	5 1/2	4.409	1.732	1 1/8	UCP321	P321	UC321		37.6	184	153	13.2									
	140	490	120	380	36	50	46	278	140	112	44	M30																	
110 5 29/32	20 15/32	5 1/2	15 3/4	1 9/16	2 5/32	1 31/32	1 11/16	11 21/32	5 29/32	4.606	1.811	1 1/4	UCP322	P322	UC322		44.0	205	180	13.2									
	150	520	140	400	40	55	50	296	150	117	46	M33																	
	6 19/64	22 7/16	5 1/2	17 23/32	1 9/16	2 5/32	1 31/32	12 7/16	6 5/16	4.961	2.008	1 1/4	UCP324	P324	UC324		55.4	207	185	13.5									
120 160	570	140	450	40	55	50	316	160	126	51	51	M33																	
	7 3/32	23 5/8	5 1/2	18 29/32	1 9/16	2 5/32	1 31/32	13 21/32	7 11/16	5.315	2.126	1 1/4	UCP326	P326	UC326		72.1	229	214	13.6									
	180	600	140	480	40	55	50	355	195	135	54	M33																	
130 180	24 13/32	5 1/2	19 11/16	1 9/16	2 5/32	2 3/8	15 15/32	7 9/32	5.709	2.323	1 1/4	UCP328	P328	UC328		92.5	253	246	13.6										
	7 7/8	24 13/32	5 1/2	19 11/16	1 9/16	2 5/32	2 3/8	15 15/32	7 9/32	5.709	2.323	1 1/4																	
	200	620	140	500	40	55	60	393	185	145	59	M33																	

Remarks 1. In Part No. of unit and units with covers, fitting codes follow bore diameter numbers. (See Table 10.5 in P.51.)
 2. Part No. of applicable grease nipples are shown below.
 A-1/4-28UNF..... 201-210, X05-X09, 305-308
 A-PT1/8..... 211-218, X10-X20, 309-328

3. As for the triple-lip seal type product (from 201 to 205 are the double-lip seal type products), supplementary code L3 (or L2) follows the Part No. of unit or bearing. (Example of Part No. : UCP206JL3, UC206L3)
 4. For the dimensions and forms of applicable bearings, see the dimensional tables of ball bearing for unit.
 5. Representative examples of the forms of housing are indicated.

UKP
Tapered bore (with adapter)
 d_1 90 ~ 125 mm



Shaft Dia. mm inch d_1	Dimensions inch mm											Bolt Size inch mm	Standard			Bestelnummer Numéro commande	Adapter ¹⁾ assembly No.	Mass kg	Basic Load Ratings kN		Factor f_0	With Pressed Steel Covers			With Cast Iron Covers			
	H	L	A	J	N	N_1	H_1	H_2	L_1	$B_1^{1)}$	Unit No.		Housing No.	Bearing No.	Open Ends Type				Closed End Type	Dimension mm inch A_s		Mass kg	Open Ends Type	Closed End Type	Dimension mm inch A_c	Mass kg		
90	3 1/2	5 127	17 432	4 3/4 121	13 1/4 337	1 5/16 33	2 9/16 65	1 25/32 45	9 21/32 245	4 31/32 126	3 13/16 97	1 M27	UKPX20	PX20	UKX20	HE2320X H2320X	29.3 29.3	133 105	14.4	— —	— —	— —	— —	— —	— —	— —	— —	— —
	3 1/2	5 33/64 140	19 9/32 490	4 23/32 120	14 31/32 380	1 13/32 36	1 31/32 50	1 13/16 46	10 3/4 273	5 1/2 140	3 13/16 97	1 1/8 M30	UKP320	P320	UK320	HE2320X H2320X	34.8 34.8	173 141	13.2	— —	— —	— —	— —	— —	— —	— —	— —	— —
100	4	5 29/32 150	20 15/32 520	5 1/2 140	15 3/4 400	1 9/16 40	2 5/32 55	1 31/32 50	11 21/32 296	5 29/32 150	4 1/8 105	1 1/4 M33	UKP322	P322	UK322	H2322X HE2322X	43.9 43.9	205 180	13.2	— —	— —	— —	— —	— —	— —	— —	— —	— —
		6 19/64 160	22 7/16 570	5 1/2 140	17 23/32 450	1 9/16 40	2 5/32 55	1 31/32 50	12 7/16 316	6 5/16 160	4 13/32 112	1 1/4 M33	UKP324	P324	UK324	H2324	55.7	207 185	13.5	— —	— —	— —	— —	— —	— —	— —	— —	— —
115	4 1/2	7 3/32 180	23 5/8 600	5 1/2 140	18 29/32 480	1 9/16 40	2 5/32 50	1 31/32 50	13 21/32 355	7 11/16 195	4 3/4 121	1 1/4 M33	UKP326	P326	UK326	HE2326 H2326	71.9 71.9	229 214	13.6	— —	— —	— —	— —	— —	— —	— —	— —	— —
		7 7/8 200	24 13/32 620	5 1/2 140	19 11/16 500	1 9/16 40	2 5/32 55	2 3/8 60	15 15/32 393	7 9/32 185	5 5/32 131	1 1/4 M33	UKP328	P328	UK328	H2328	92.5	253 246	13.6	— —	— —	— —	— —	— —	— —	— —	— —	— —

Note 1) Codes shown in parentheses indicate the dimensions and Part No. of applicable adapter (H2300X series) for UK200L3 series (triple-lip seal type).

Remarks 1. In Part No. of unit and units with covers, fitting codes follow bore diameter numbers. (See Table 10.5 in P.51.)

2. Part No. of applicable grease nipples are shown below.

A-1/4-28UNF.....205-210, X05-X09, 305-308
A-PT1/8.....211-218, X10-X20, 309-328

3. In Part No. of unit with adapters and bearing with adapters, Part No. of applicable adapter follow the Part No. shown in the dimensional tables. (Example of Part No. : UKP206J + H306X, UK206 + H306X)

4. As for the triple-lip seal type product (205 is the double-lip seal type product), supplementary code L3 (or L2) follows the Part No. of unit or bearing.

5. For the dimensions and forms of applicable bearings and adapters, see the dimensional tables of ball bearing for unit and adapter assemblies.

6. Representative examples of the forms of housing are indicated.