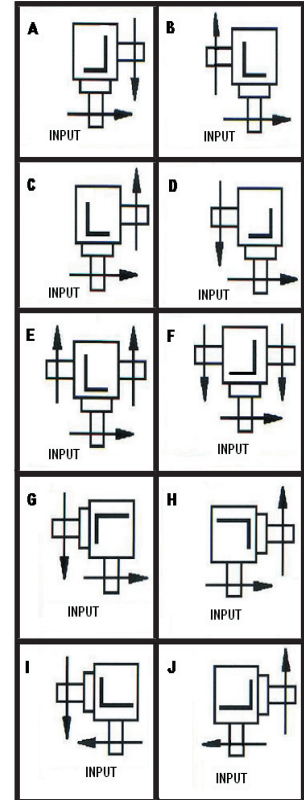
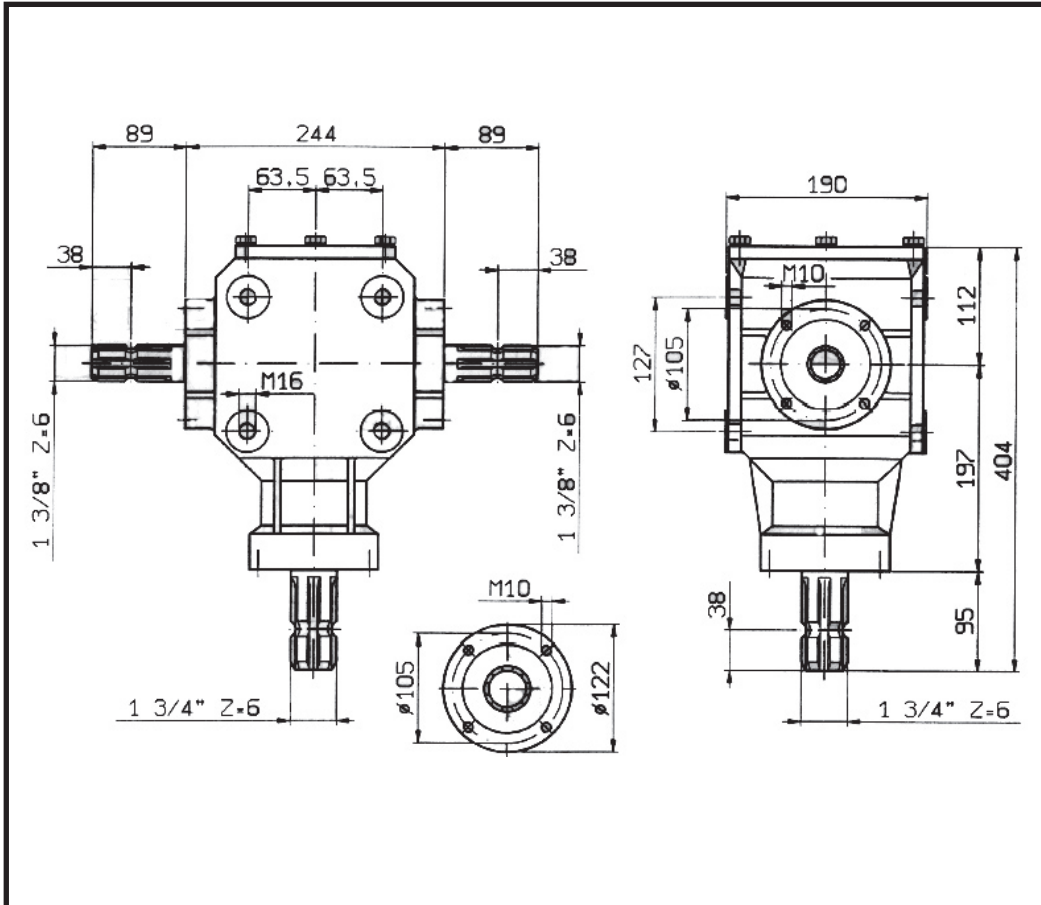
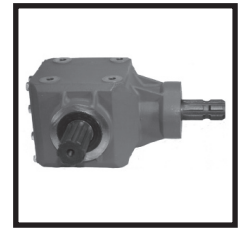






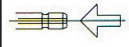
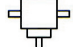
T - 110

	31 Kg
	Type SAE.90EP Lt. 2,50



10 Z	11 Z	30 Z	31 Z
20 X-Y	21 X-Y	22 X-Y	23 X-Y

T - 110

i														Ref.
	r.p.m.	r.p.m.	HP	KW	Nm	X	Y	Z						
2,30 : 1	540	235	35	26	1047	20	20	10	Z	E - F	8305114			
2,30 : 1	540	235	35	26	1047	20		10	Z	A - B	8305115			
2,30 : 1	540	235	35	26	1047		20	10	Z	C - D	8305116			
1,92 : 1	540	281	45	33	1124	20	20	10	Z	E - F	8305111			
1,92 : 1	540	281	45	33	1124	20		10	Z	A - B	8305112			
1,92 : 1	540	281	45	33	1124		20	10	Z	C - D	8305113			
1,57 : 1	540	344	66	49	1348	20	20	10	Z	E - F	8305108			
1,57 : 1	540	344	66	49	1348	20		10	Z	A - B	8305109			
1,57 : 1	540	344	66	49	1348		20	10	Z	C - D	8305110			
1,35 : 1	540	400	85	62	1493	20	20	10	Z	E - F	8305105			
1,35 : 1	540	400	85	62	1493	20		10	Z	A - B	8305106			
1,35 : 1	540	400	85	62	1493		20	10	Z	C - D	8305107			
1 : 1	540	540	110	81	1431	20	20	10	Z	E - F	8305136			
1 : 1	540	540	110	81	1431	20		10	Z	A - B	8305103			
1 : 1	540	540	110	81	1431		20	10	Z	C - D	8305104			
1 : 1,35	540	729	105	77	1012	20		10	X	I - J	8305106			
1 : 1,35	540	729	105	77	1012		20	10	Y	G - H	8305107			
1 : 1,57	540	848	91	67	754	20		10	X	I - J	8305109			
1 : 1,57	540	848	91	67	754		20	10	Y	G - H	8305110			
1 : 1,92	540	1037	70	51	474	20		10	X	I - J	8305112			
1 : 1,92	540	1037	70	51	474		20	10	Y	G - H	8305113			
1 : 2,30	540	1242	60	44	339	20		10	X	I - J	8305115			
1 : 2,30	540	1242	60	44	339		20	10	Y	G - H	8305116			