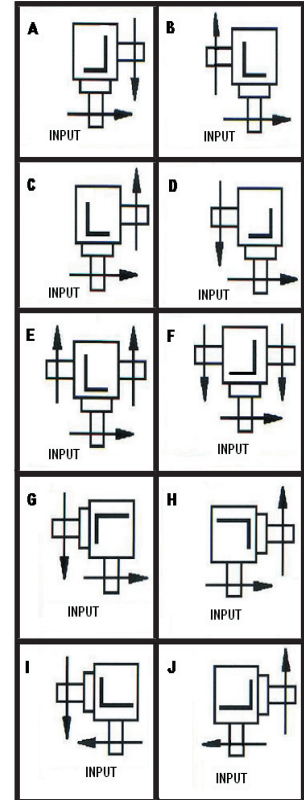
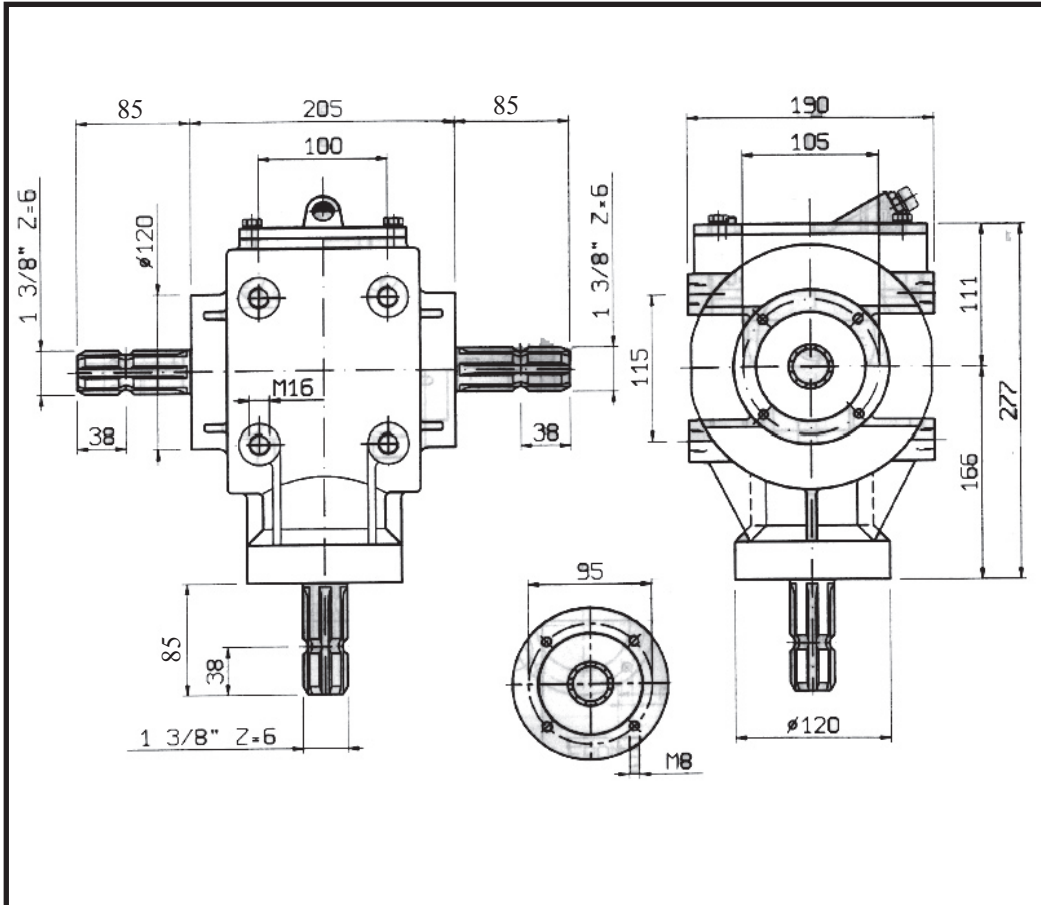
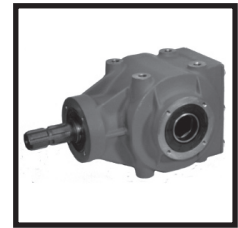




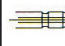
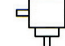


	23 Kg
	Type SAE.90EP Lt. 1,70



10	11	12	30	Z
20	21	22	23	24
X-Y	X-Y	X-Y	X-Y	X-Y
				25
				X-Y

i														Ref.
	r.p.m.	r.p.m.	HP	KW	Nm	X	Y	Z						
2,9 : 1	540	185	29	21	1050	21	21	11	Z	E - F	8305203			
2,9 : 1	540	185	29	21	1050	20	20	10	Z	E - F	8305100			
2,9 : 1	540	185	29	21	1050	20		10	Z	A - B	8305101			
2,9 : 1	540	185	29	21	1050		20	10	Z	C - D	8305102			
1,9 : 1	540	270	40	30	960	21	21	11	Z	E - F	8305202			
1,9 : 1	540	270	40	30	960	20	20	10	Z	E - F	8305096			
1,9 : 1	540	270	40	30	960	20		10	Z	A - B	8305134			
1,9 : 1	540	270	40	30	960		20	10	Z	C - D	8305135			
1,58 : 1	540	370	43	32	855	21	21	11	Z	E - F	8305201			
1,58 : 1	540	370	43	32	855	20	20	10	Z	E - F	8305093			
1,58 : 1	540	370	43	32	855	20		10	Z	A - B	8305094			
1,58 : 1	540	370	43	32	855		20	10	Z	C - D	8305095			
1 : 1	540	540	55	41	690	21	21	11	Z	E - F	8305200			
1 : 1	540	540	55	41	690	20	20	10	Z	E - F	8305090			
1 : 1	540	540	55	41	690	20		10	Z	A - B	8305091			
1 : 1	540	540	55	41	690		20	10	Z	C - D	8305092			
1 : 1,58	540	788	55	41	438	20		10	X	I - J	8305094			
1 : 1,58	540	788	55	41	438		20	10	Y	G - H	8305095			
1 : 1,90	540	1080	55	41	364	20		10	X	I - J	8305134			
1 : 1,90	540	1080	55	41	364		20	10	Y	G - H	8305135			
1 : 2,9	540	1566	45	33	195	20		10	X	I - J	8305101			
1 : 2,9	540	1566	45	33	195		20	10	Y	G - H	8305102			