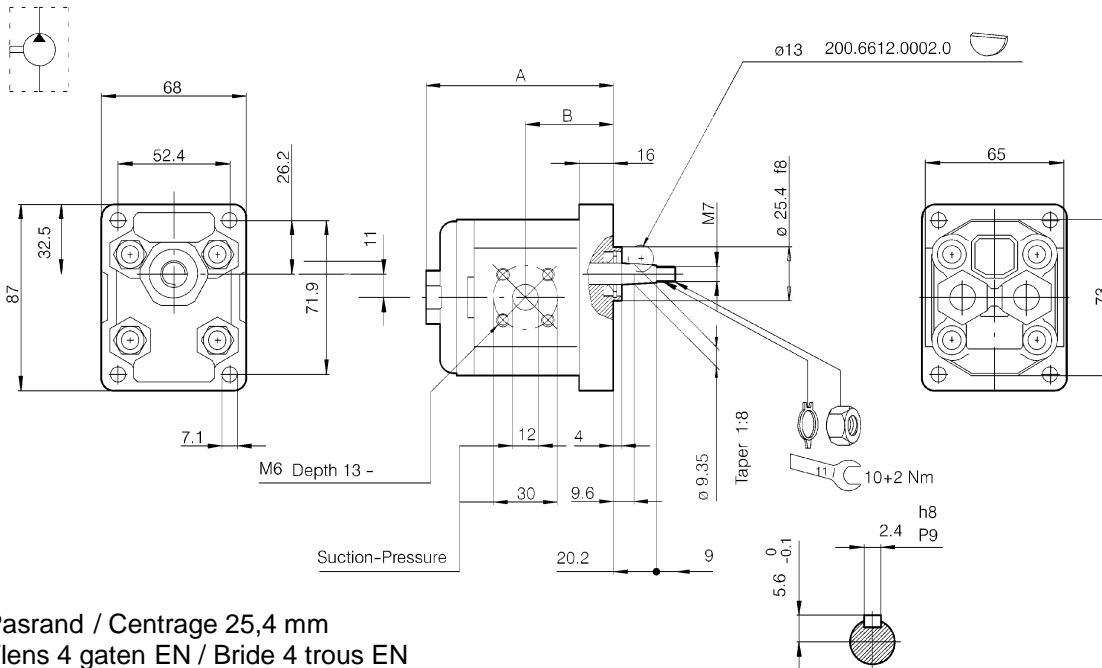


## Tandwielpompen Groep 1, AP100/...218

### Pompes à engrenages Group 1 : 218



Pasrand / Centrage 25,4 mm  
 Flens 4 gaten EN / Bride 4 trous EN  
 Konische As 1:8 / Axe conique 1:8

Type	cm <sup>3</sup>	BAR			T/min				A	Ref.
		Kont.	Int.	Max	Max..	Min.				
AP100/1.2 D 218	1.2	210	250	280	4500	800	Ø30/M6	Ø30/M6	82.5	8065583
AP100/1.2 S 218	1.2	210	250	280	4500	800	Ø30/M6	Ø30/M6	82.5	8050342
AP100/1.7 D 218	1.7	210	250	280	4500	650	Ø30/M6	Ø30/M6	84.5	8069313
AP100/1.7 S 218	1.7	210	250	280	4500	650	Ø30/M6	Ø30/M6	84.5	8069311
AP100/2.5 D 218	2.5	210	250	280	4500	650	Ø30/M6	Ø30/M6	88.0	8069306
AP100/2.5 S 218	2.5	210	250	280	4500	650	Ø30/M6	Ø30/M6	88.0	8069311
AP100/3.5 D 218	3.5	210	230	250	3500	650	Ø30/M6	Ø30/M6	92.0	8069310
AP100/3.5 S 218	3.5	210	230	250	3500	650	Ø30/M6	Ø30/M6	92.0	8065585
AP100/4.3 D 218	4.3	210	230	250	3500	550	Ø30/M6	Ø30/M6	96.0	8065588
AP100/4.3 S 218	4.3	210	230	250	3500	550	Ø30/M6	Ø30/M6	96.0	8050349
AP100/5 D 218	5.0	210	230	250	3000	500	Ø30/M6	Ø30/M6	98.5	8069307
AP100/5 S 218	5.0	210	230	250	3000	500	Ø30/M6	Ø30/M6	98.5	8050350
AP100/6.5 D 218	6.5	190	220	240	2500	500	Ø30/M6	Ø30/M6	103.5	8069309
AP100/6.5 S 218	6.5	190	220	240	2500	500	Ø30/M6	Ø30/M6	103.5	8069308
AP100/8 D 218	7.8	180	210	230	2500	500	Ø30/M6	Ø30/M6	109	8050352

Draairichting / Rotation  
 D = rechts / droite  
 S = links / gauche

